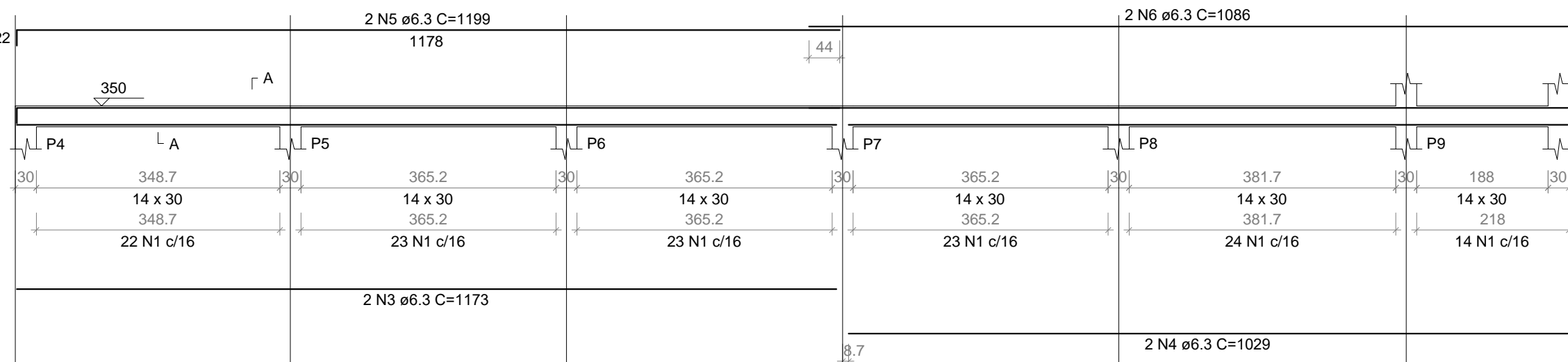
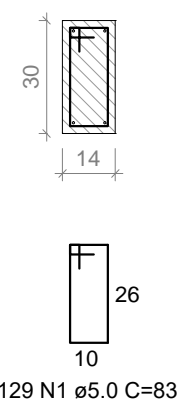


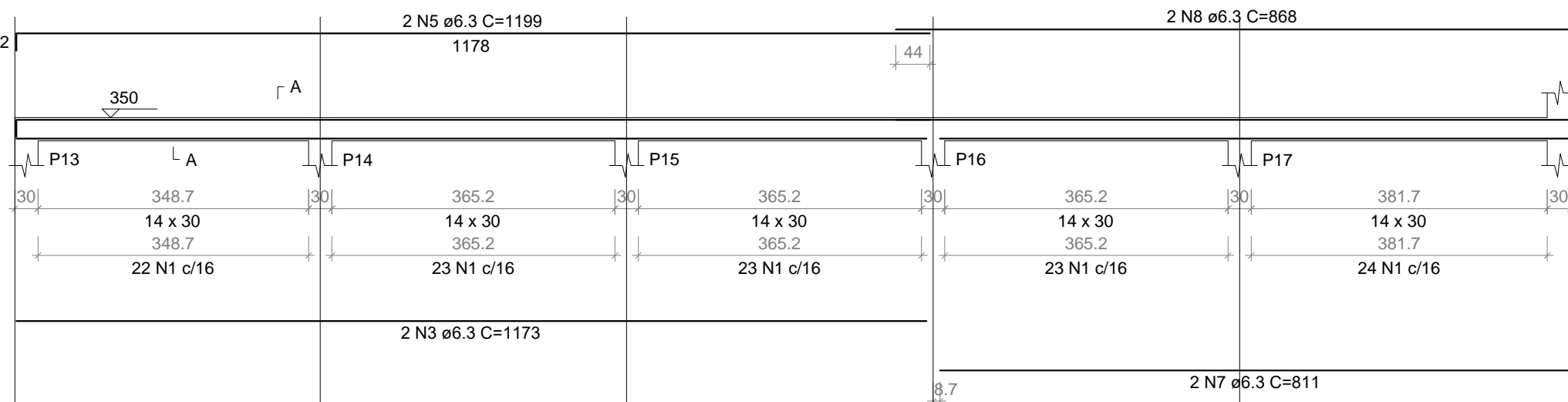
V2
ESC 1:75



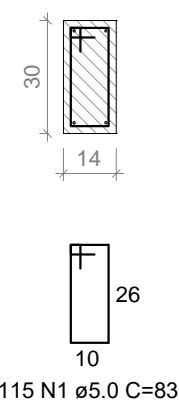
SEÇÃO A-A
ESC 1:20



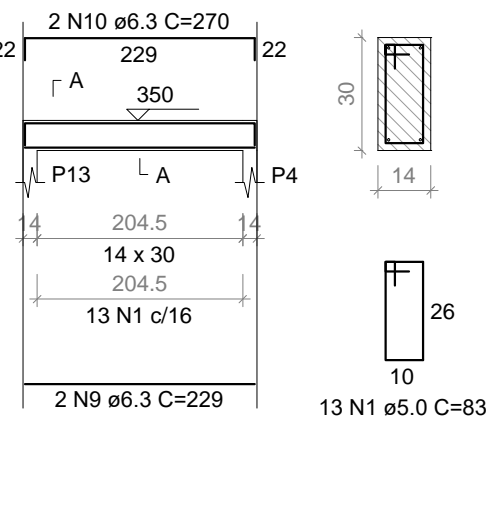
V3
ESC 1:75



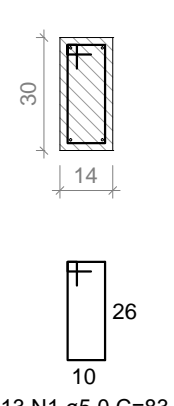
SEÇÃO A-A
ESC 1:20



V4
ESC 1:75



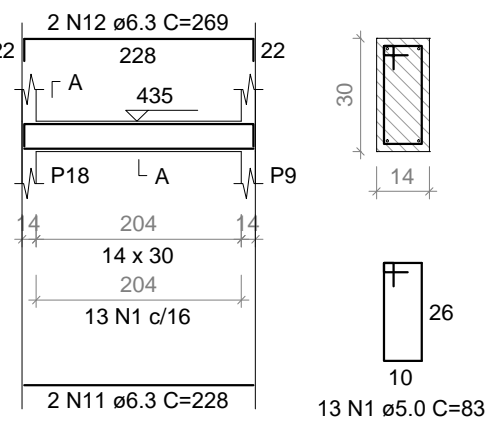
SEÇÃO A-A
ESC 1:20



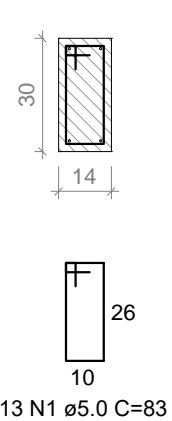
RESUMO DO AÇO 1º ANDAR

AÇO	DIAM (mm)	C.TOTAL (m)	QUANT + 10% (Barras)
CA50	6.3	285.8	27
CA60	8.0	70.6	7
CA60	10.0	695.1	64
CA60	5.0	1520.4	140
PESO TOTAL (kg)			
CA50		579	
CA60		257.8	
Volume de concreto (C-25) = 10.58 m³			
Área de forma = 197.11 m²			

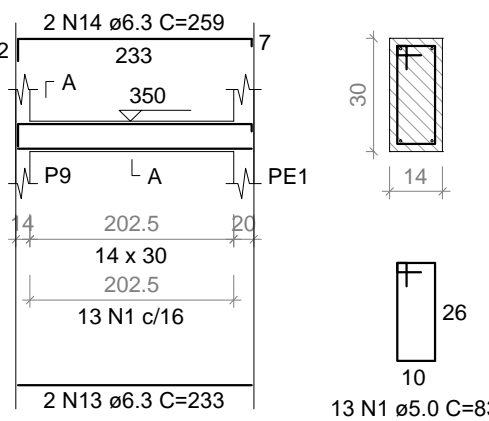
V5
ESC 1:75



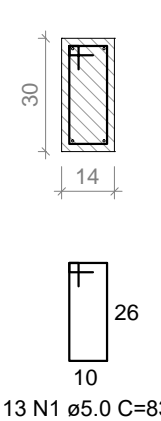
SEÇÃO A-A
ESC 1:20



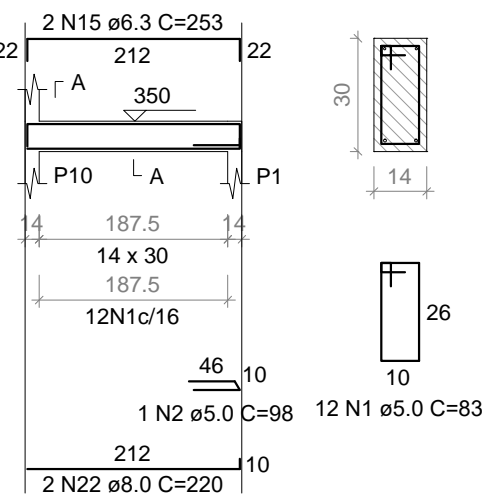
V6
ESC 1:75



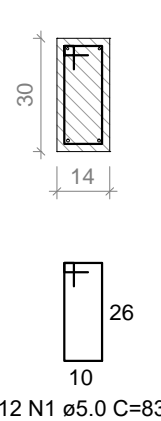
SEÇÃO A-A
ESC 1:20



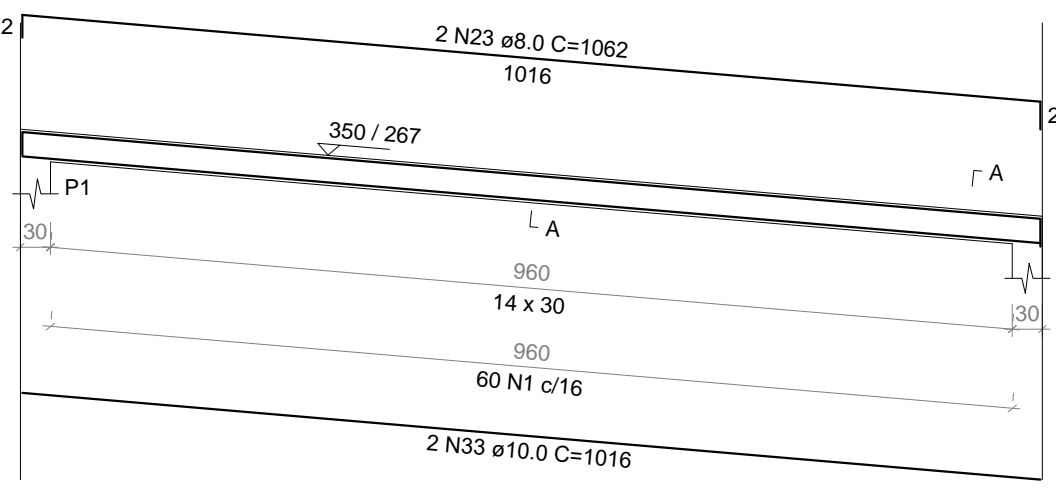
V7
ESC 1:75



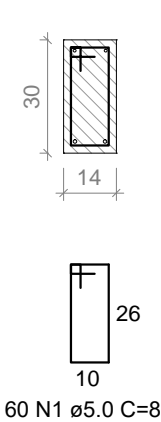
SEÇÃO A-A
ESC 1:20



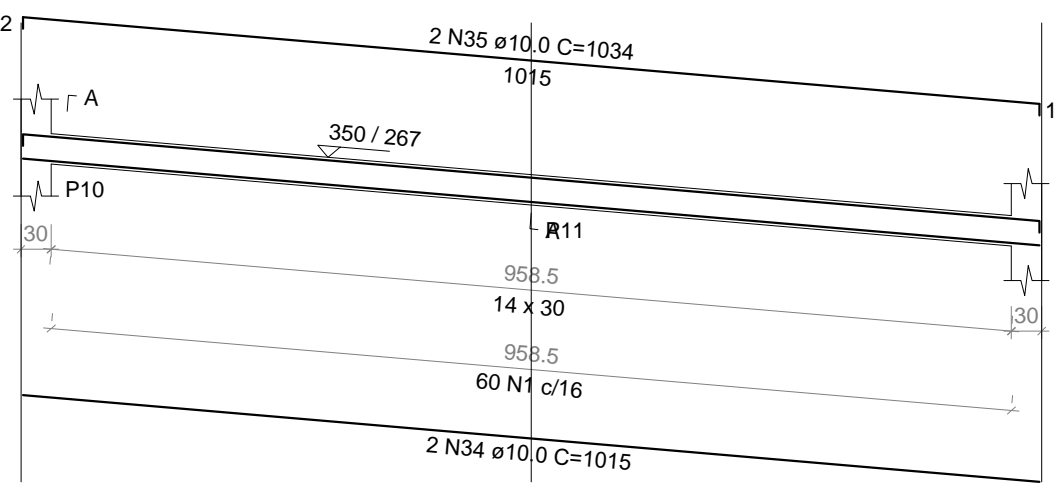
V8
ESC 1:75



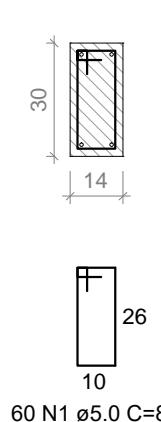
SEÇÃO A-A
ESC 1:20



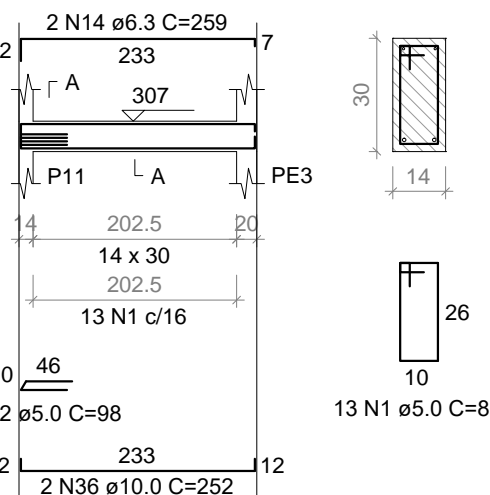
V9
ESC 1:75



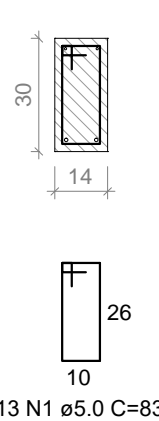
SEÇÃO A-A
ESC 1:20



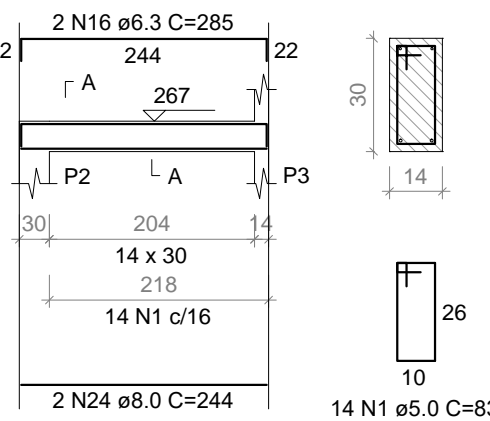
V10
ESC 1:75



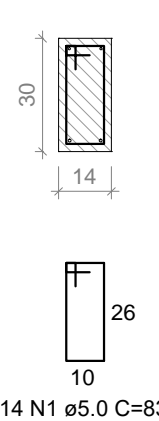
SEÇÃO A-A
ESC 1:20



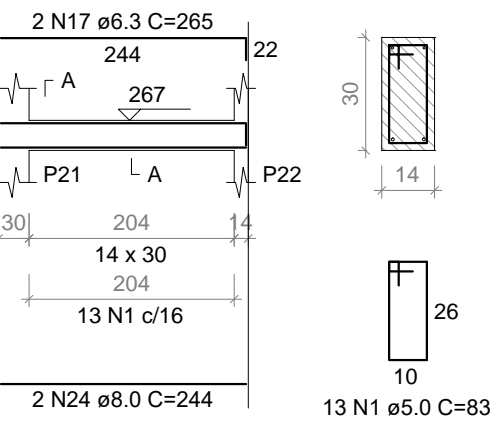
V11
ESC 1:75



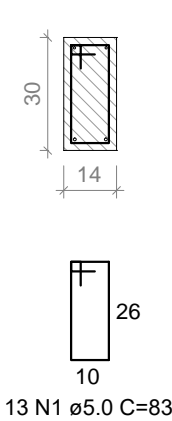
SEÇÃO A-A
ESC 1:20



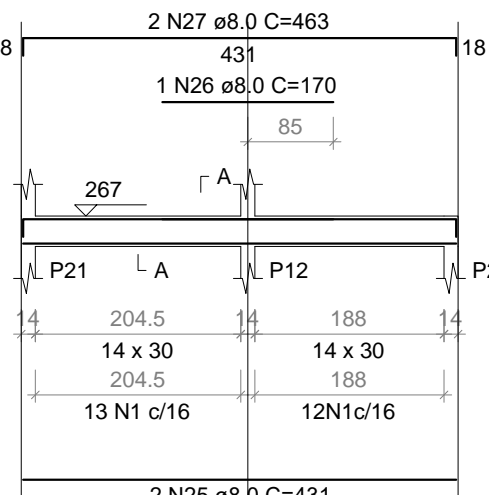
V12
ESC 1:75



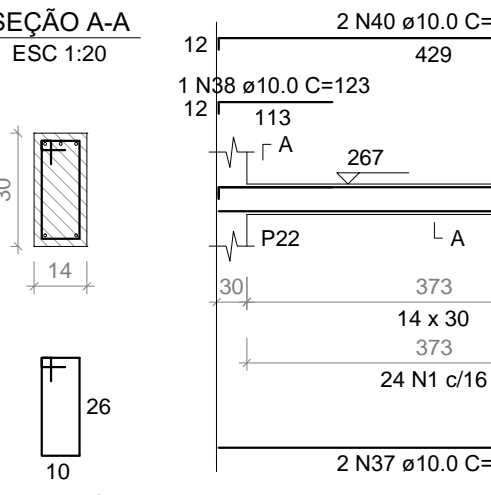
SEÇÃO A-A
ESC 1:20



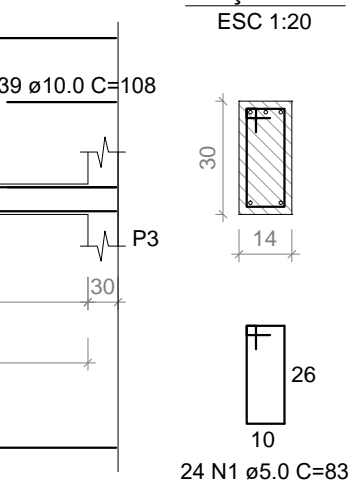
V13
ESC 1:75



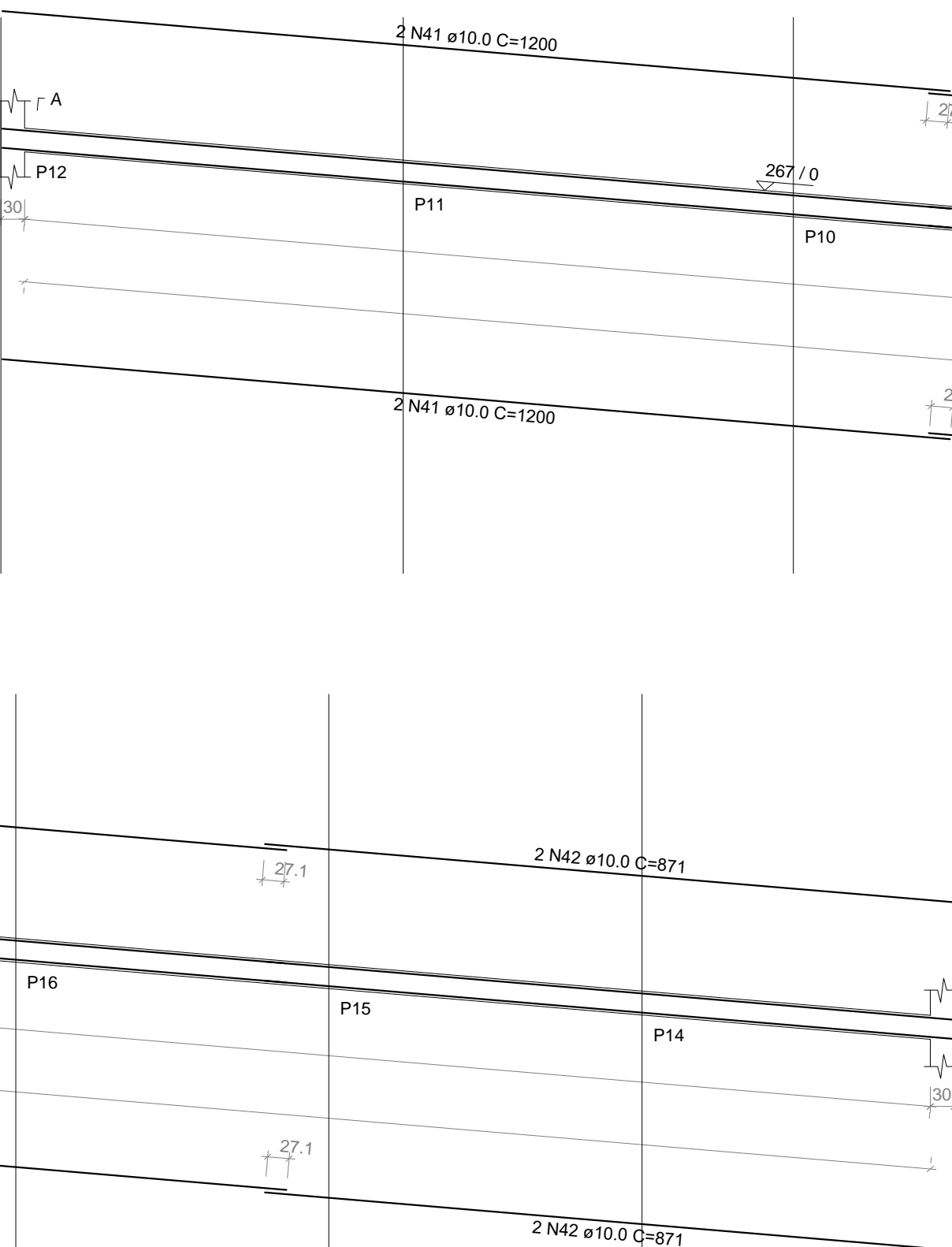
V14
ESC 1:75



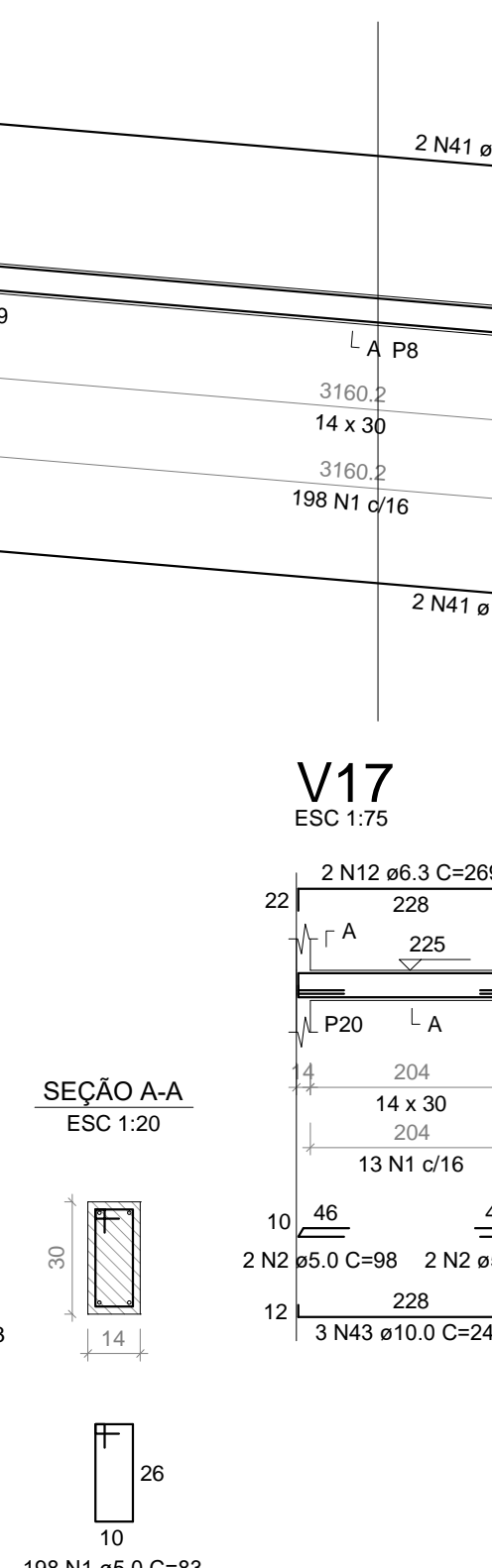
V15
ESC 1:75



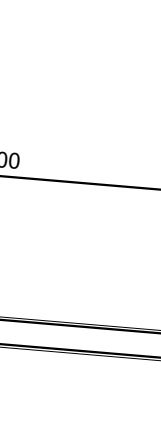
V16
ESC 1:75



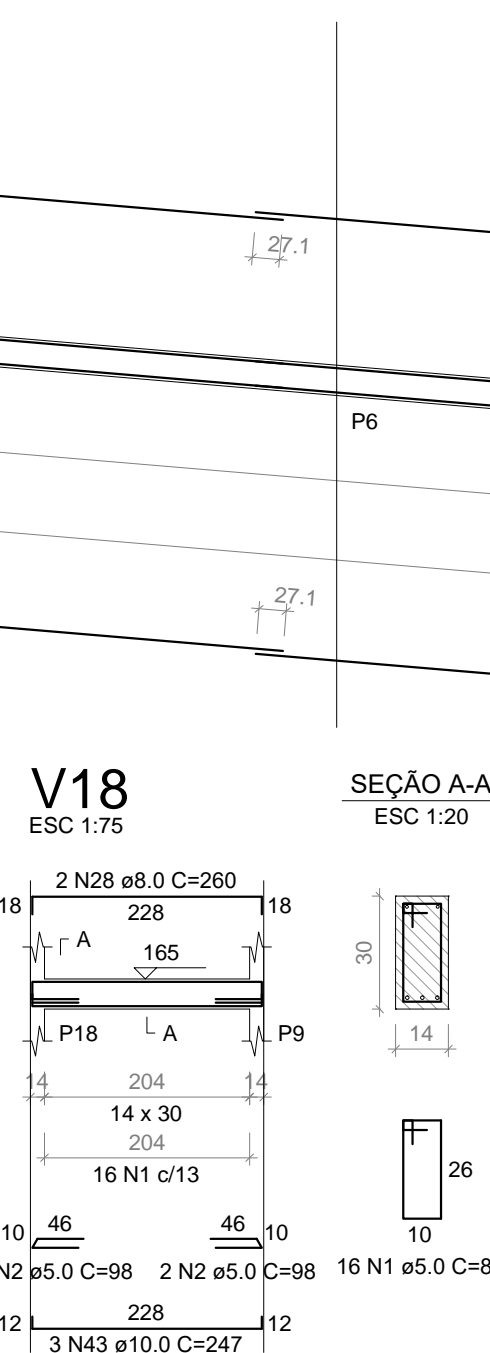
V17
ESC 1:75



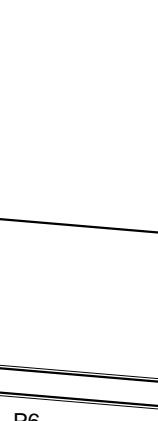
SEÇÃO A-A
ESC 1:20



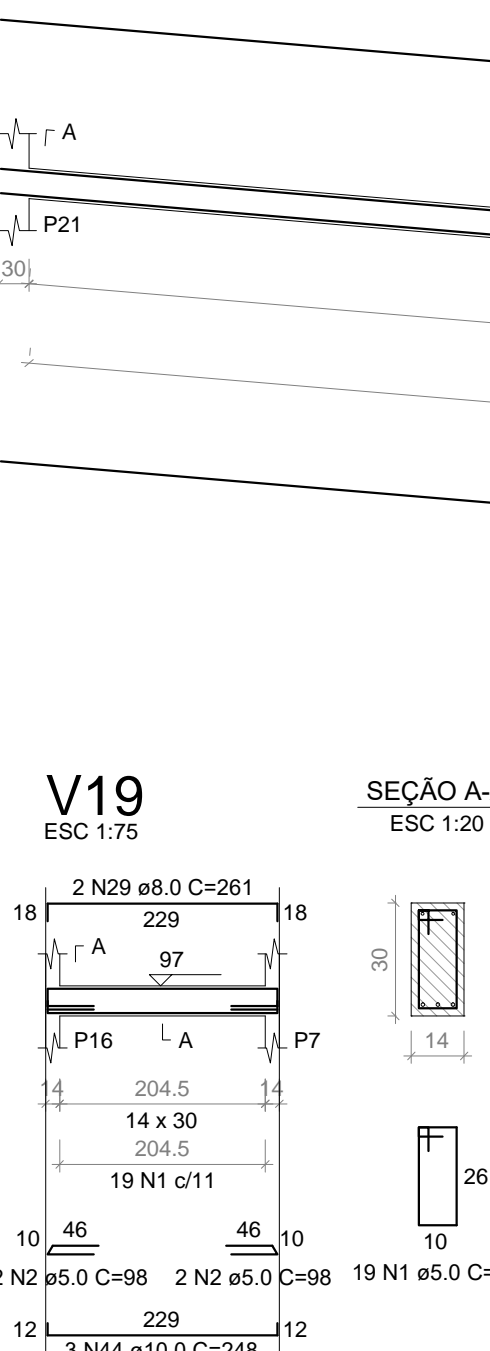
V18
ESC 1:75



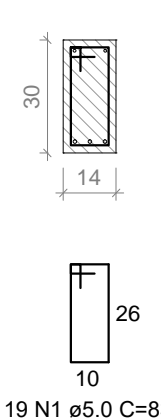
SEÇÃO A-A
ESC 1:20



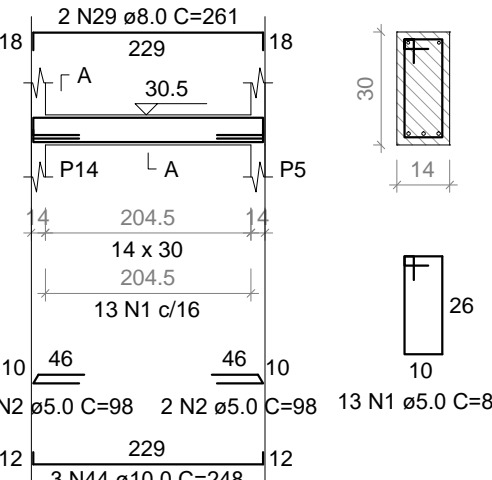
V19
ESC 1:75



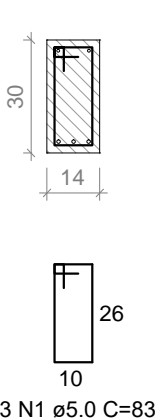
SEÇÃO A-A
ESC 1:20



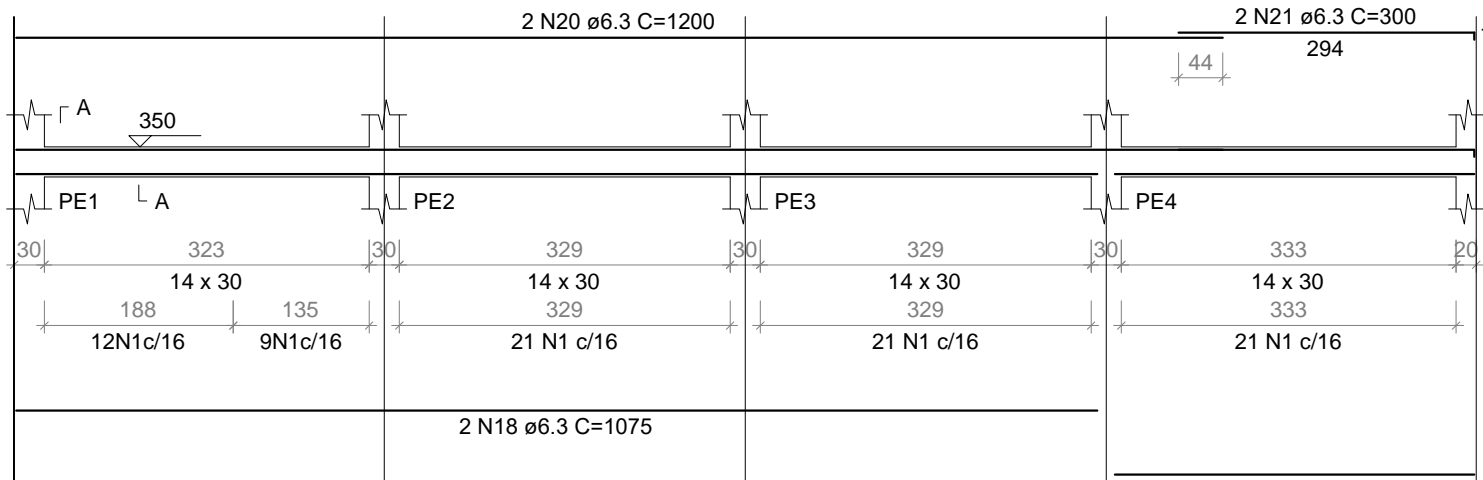
V20
ESC 1:75



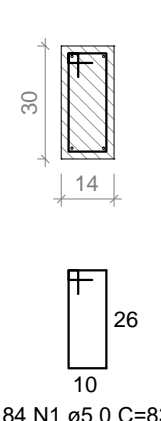
SEÇÃO A-A
ESC 1:20



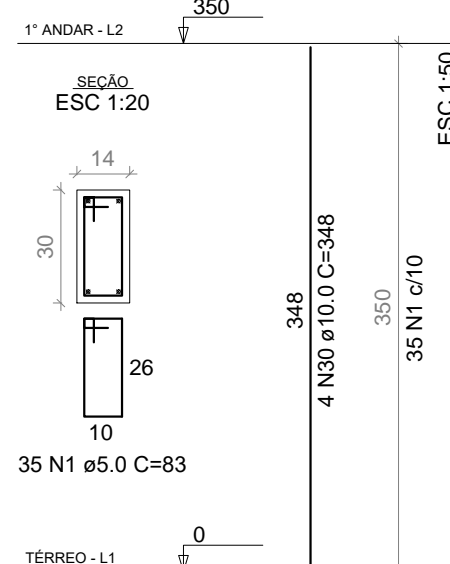
VE
ESC 1:75



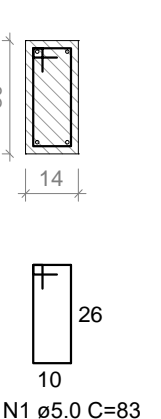
SEÇÃO A-A
ESC 1:20



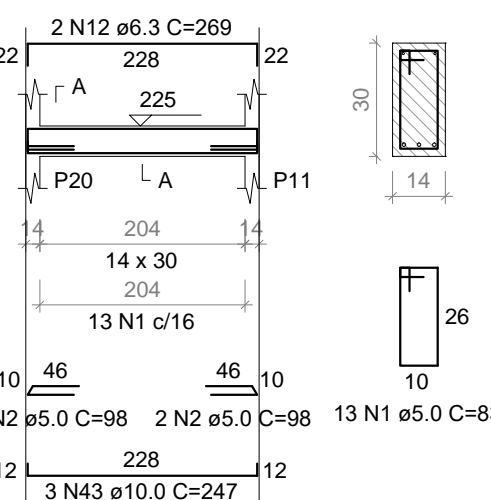
P1=P4=P5=P6=P7=
=P8=P13=P14=P15=
=P16=P17



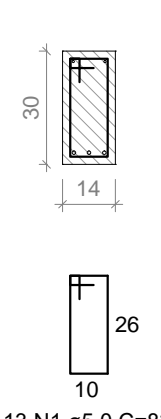
SEÇÃO A-A
ESC 1:20



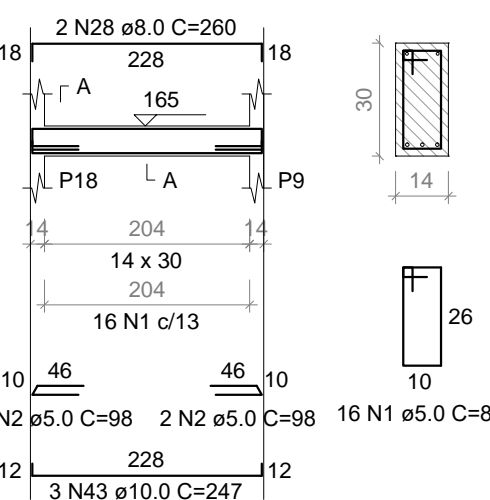
V17
ESC 1:75



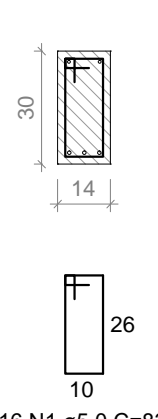
SEÇÃO A-A
ESC 1:20



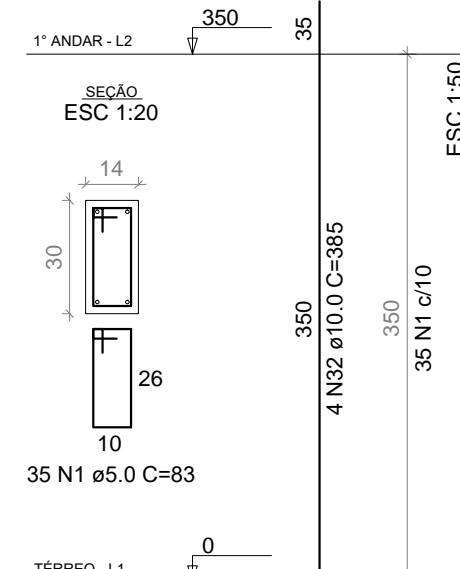
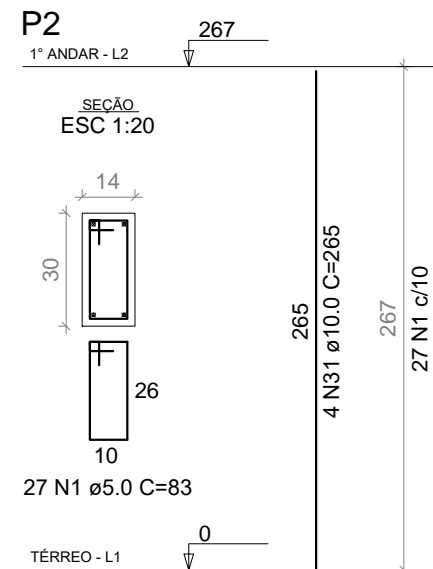
V18
ESC 1:75



SEÇÃO A-A
ESC 1:20



P3=P9=P10=P11=
=P12=P18=P19=P20=
=P21=P22



PROJETO ESTRUTURAL		
ENDEREÇO: Rua Carolina Tavares, Serra Monte Alto Caparaó-MG, CEP. 36979-000		CONTEÚDO: - Vigas - Pilares
RESP. TÉCNICO: HUGO AFONSO TAVARES CREA: MG-201118/D		
PROPRIETÁRIO: MUNICÍPIO DE ALTO CAPARAÓ CNPJ: 01.616.270/0001-94		
DATA: Março/2022	QUADRO DE ÁREAS:	OBSERVAÇÕES
FOLHA 02/03	Prefeitura Municipal de Alto Caparaó	
Rua Ludovina Emerich, Água Verde, Nº 321 CEP: 36979-000, Alto Caparaó - MG		